



3319 N. OCEAN DRIVE HOLLYWOOD FLORIDA

**BEACHSIDE**  
RESIDENCES

more information  
UNITSPECS & AVAILABILITY  
on  
[www.beachsideresidences.com](http://www.beachsideresidences.com)



Now accepting reservations



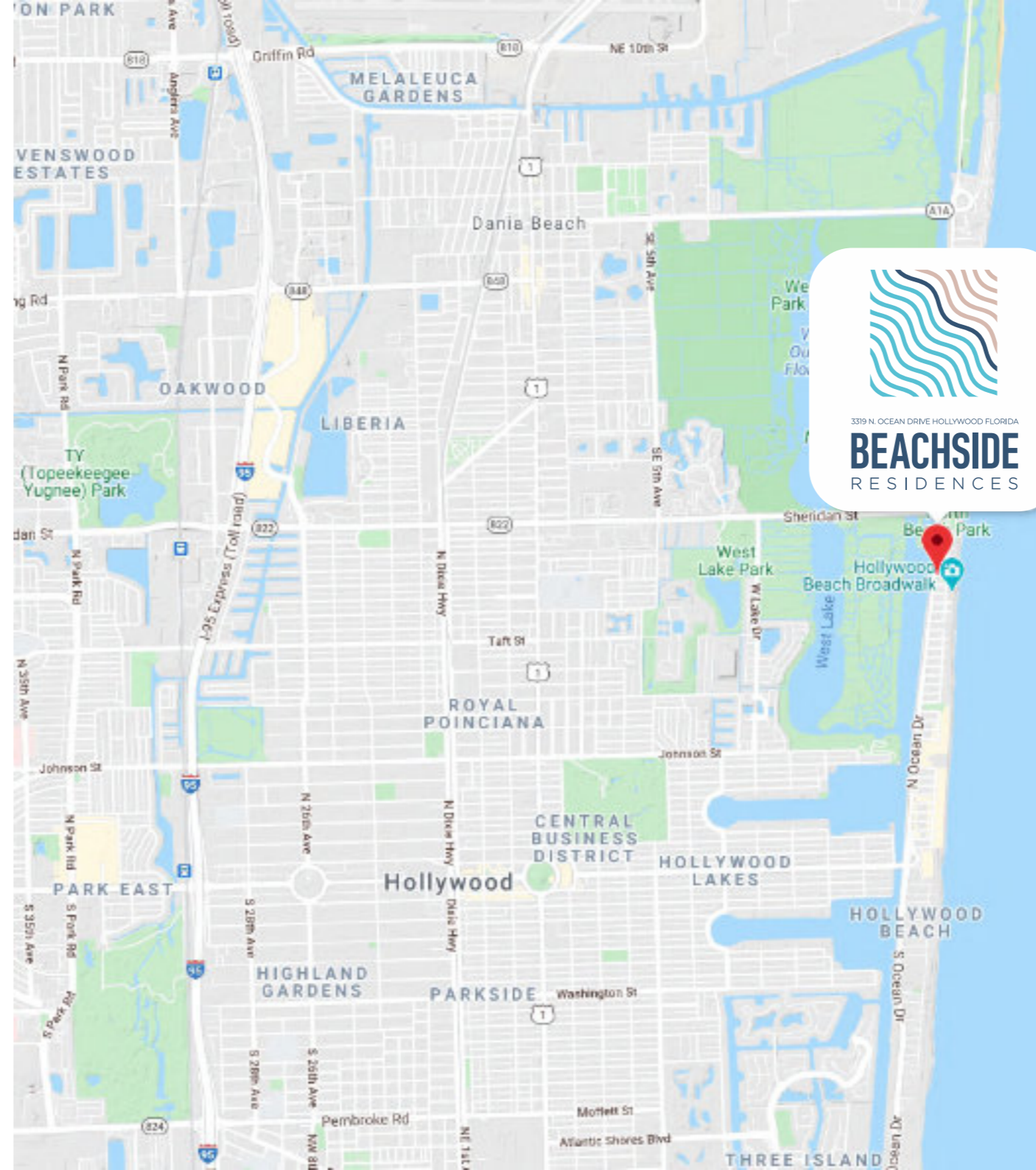
3319 N. OCEAN DRIVE HOLLYWOOD FLORIDA  
**BEACHSIDE**  
RESIDENCES

Beachside Residences brings a modern elegance and luxury living experience to one of the best beaches in America\*. This new construction condominium features just 36 units. It offers a minimalistic design and breathtaking views of the Atlantic Ocean and the Intracoastal Waterway.

\* Ranked #7 in Trip Advisor's 2020 list of Best Beaches in the United States

# Location

Beachside Residences is located just 10 minutes from Fort Lauderdale-Hollywood International Airport. This luxury mid-rise building sits just off the sand along the famed Hollywood Beach Broadwalk, where unique shopping and dining experiences await.





3319 N. OCEAN DRIVE HOLLYWOOD FLORIDA

# BEACHSIDE

RESIDENCES

construction  
location

# JUST STEPS from the sand

---

Private balconies offer stunning views of the the Atlantic Ocean and Intracoastal Waterway. Feel the breeze and indulge in the sounds of living on the beach.



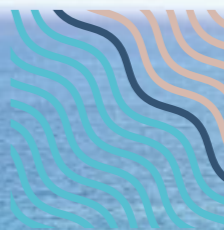


## only 36 units

---

This new construction condominium features just 36 units.

Our prices start in the \$600,000's and we're now accepting reservations.



3319 N. OCEAN DRIVE HOLLYWOOD FLORIDA

# BEACHSIDE

RESIDENCES

A luxury mid-rise condominium

# designed by minotti

Our units are inspired by Minotti, the famed Italian design company and feature the finest Italian finishes.

Minotti is an Italian company with a solid reputation at an international level as an excellent expression of “Made in Italy” in the field of a classic-modern lifestyle in the residential and hospitality segments.





# luxury townhomes

---

Beachside Residences offers one to four bedroom units, including our breathtaking 2 story ocean view townhomes.

## ocean views

---

Beachside Residences offers a minimalistic design and top of line finishes. Flooring, countertops and cabinets all hand selected by Italian designers.





3319 N. OCEAN DRIVE HOLLYWOOD FLORIDA

# BEACHSIDE

RESIDENCES

A new brand of modern elegance and luxury design is coming to one of the best beaches in America.



## spacious lobby

---

Beachside Residences has a spacious lobby. Greet your guest and socialize with other residents in the tastefully designed common area.

# private pool and gym

---

Beachside Residences has private pool and gym. Our exclusive amenities await residents. Relax by the pool or enjoy your morning workout just steps away from the beach.





## 1-4 bedroom units

---

Beachside Residences offers one to four bedroom units, including our breathtaking 2 story ocean view townhomes.

Choose the most suitable option for you - a smaller unit for weekend getaways or a luxury townhouse as your new home.



3319 N. OCEAN DRIVE HOLLYWOOD FLORIDA  
**BEACHSIDE**  
RESIDENCES

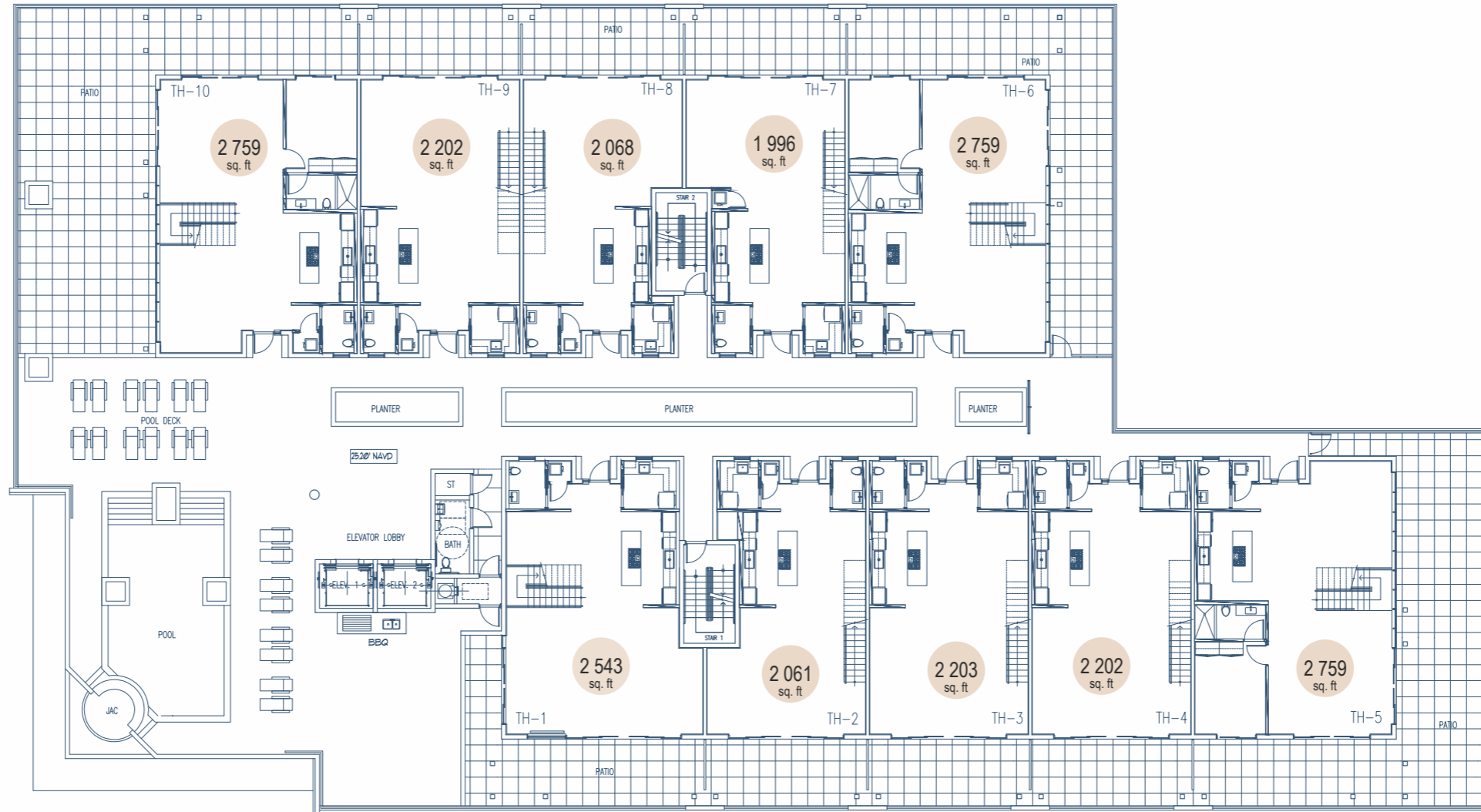
**floor plans**

# 3RD floor/floor plans

TOWNHOUSES, LOWER LEVELS

Intracoastal view

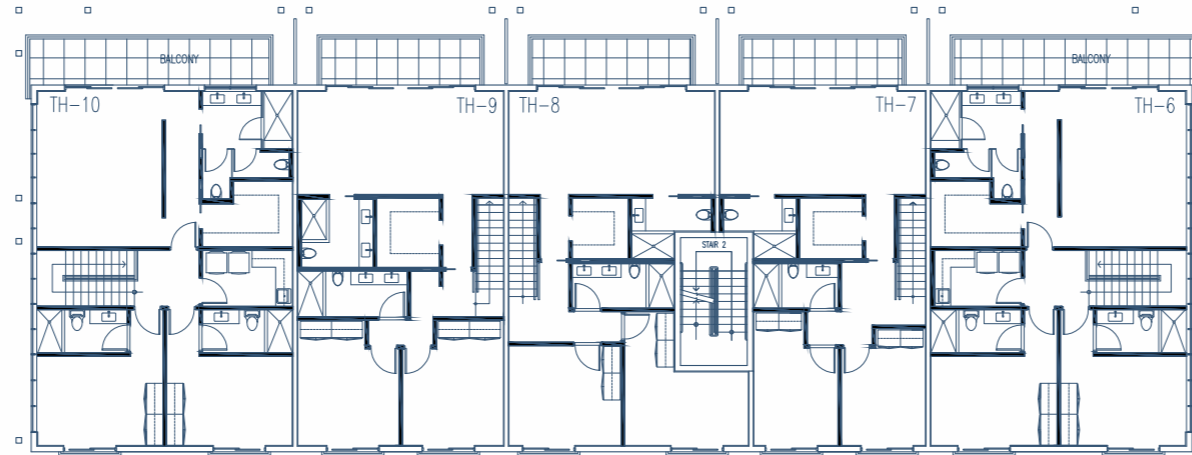
OCEANVIEW



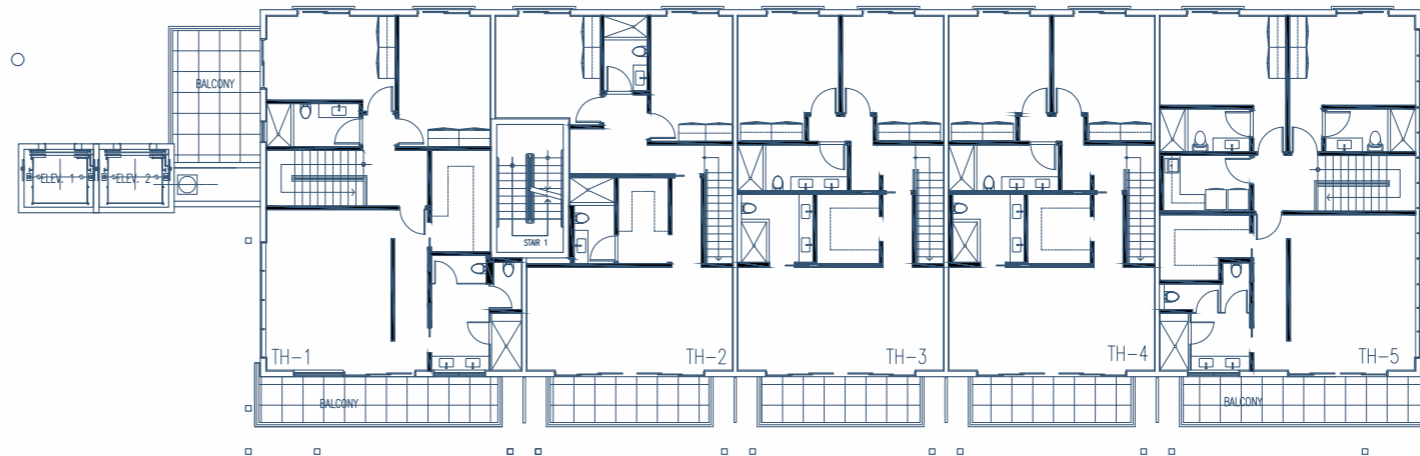
# 4TH floor/floor plans

TOWNHOUSES, UPPER LEVELS

Intracoastal view



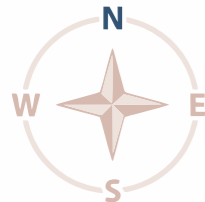
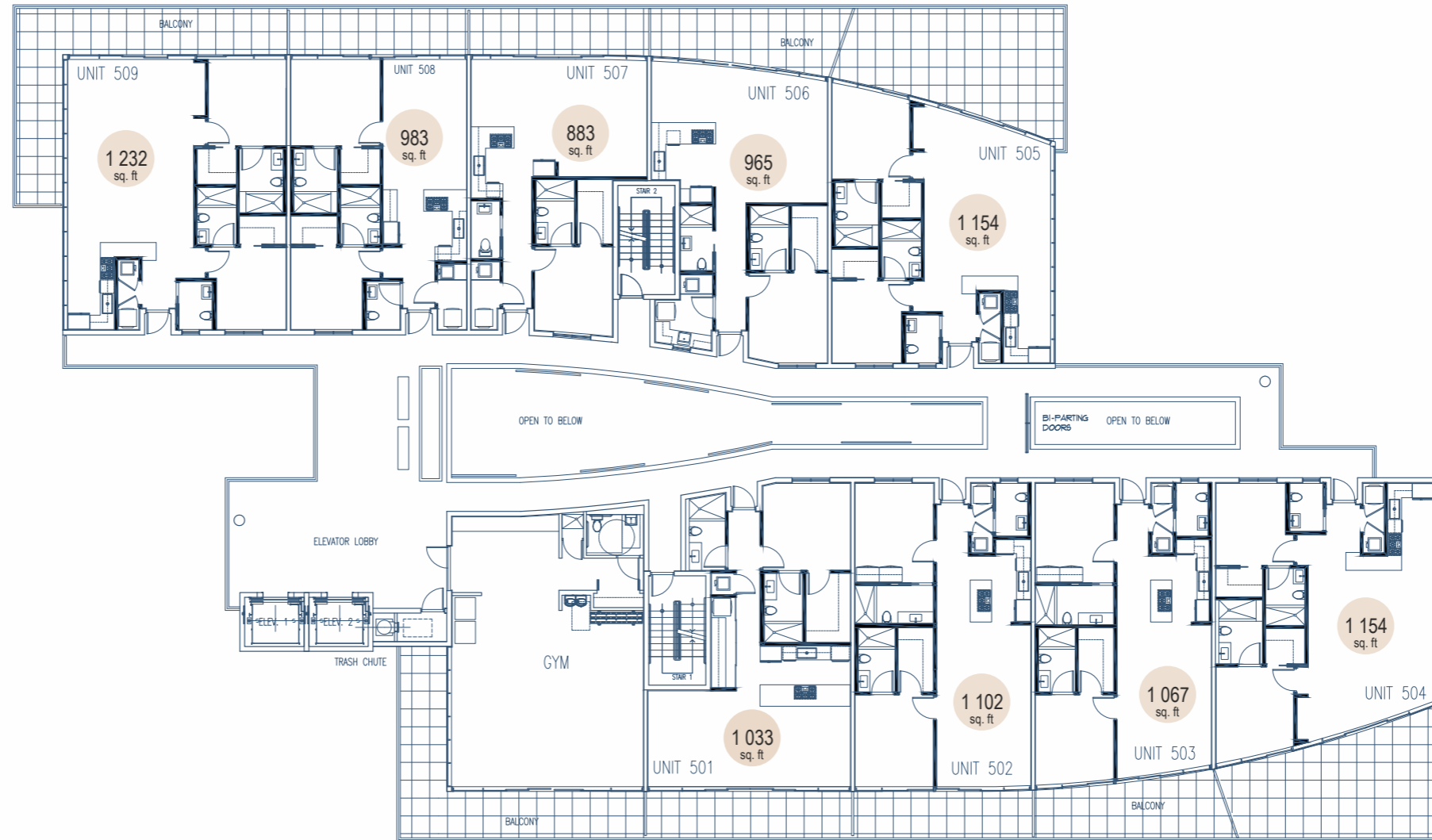
OCEANVIEW



# 5TH floor/floor plans

Intracoastal view

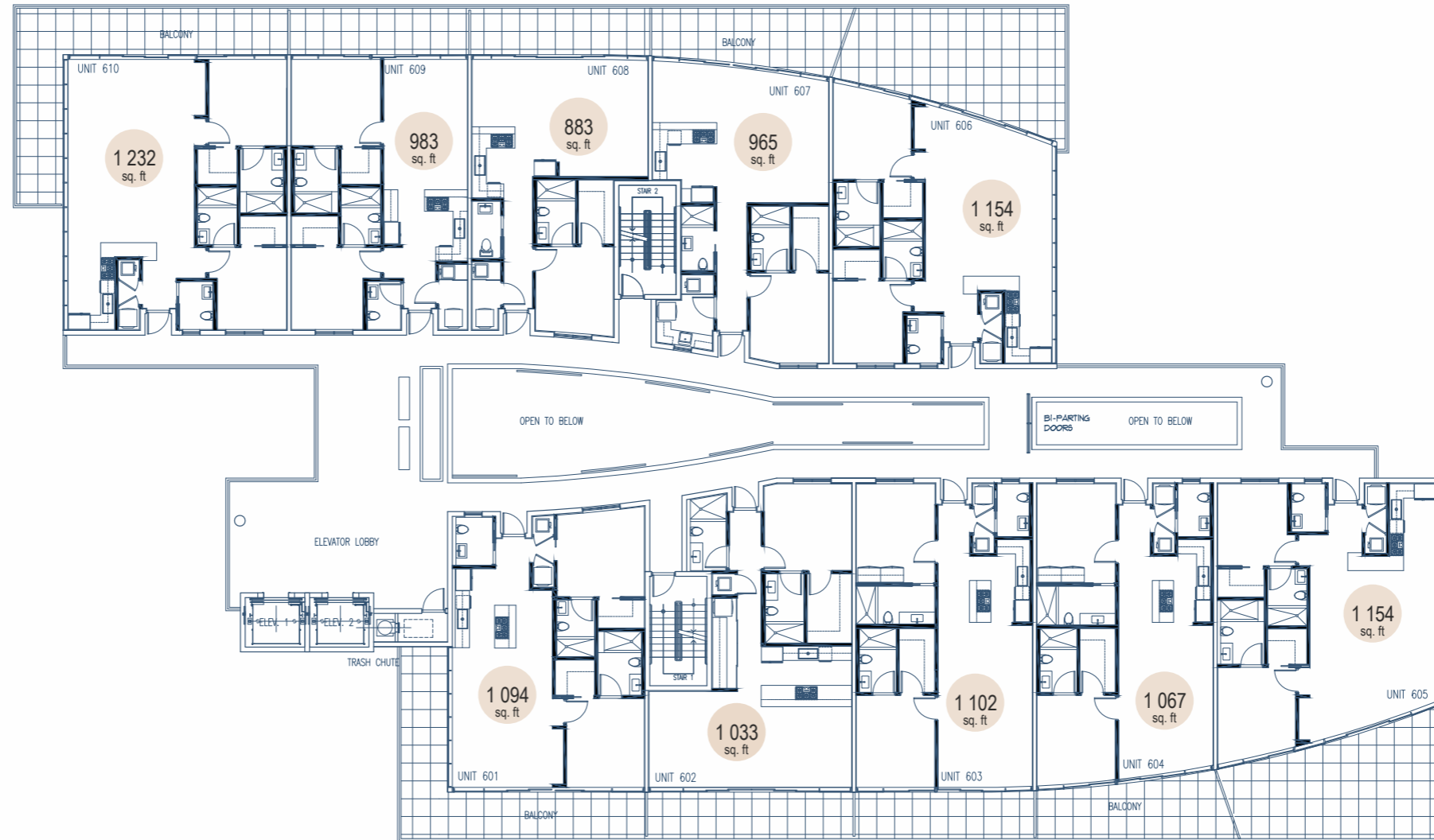
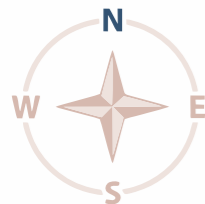
OCEANVIEW



# 6TH floor/floor plans

Intracoastal view

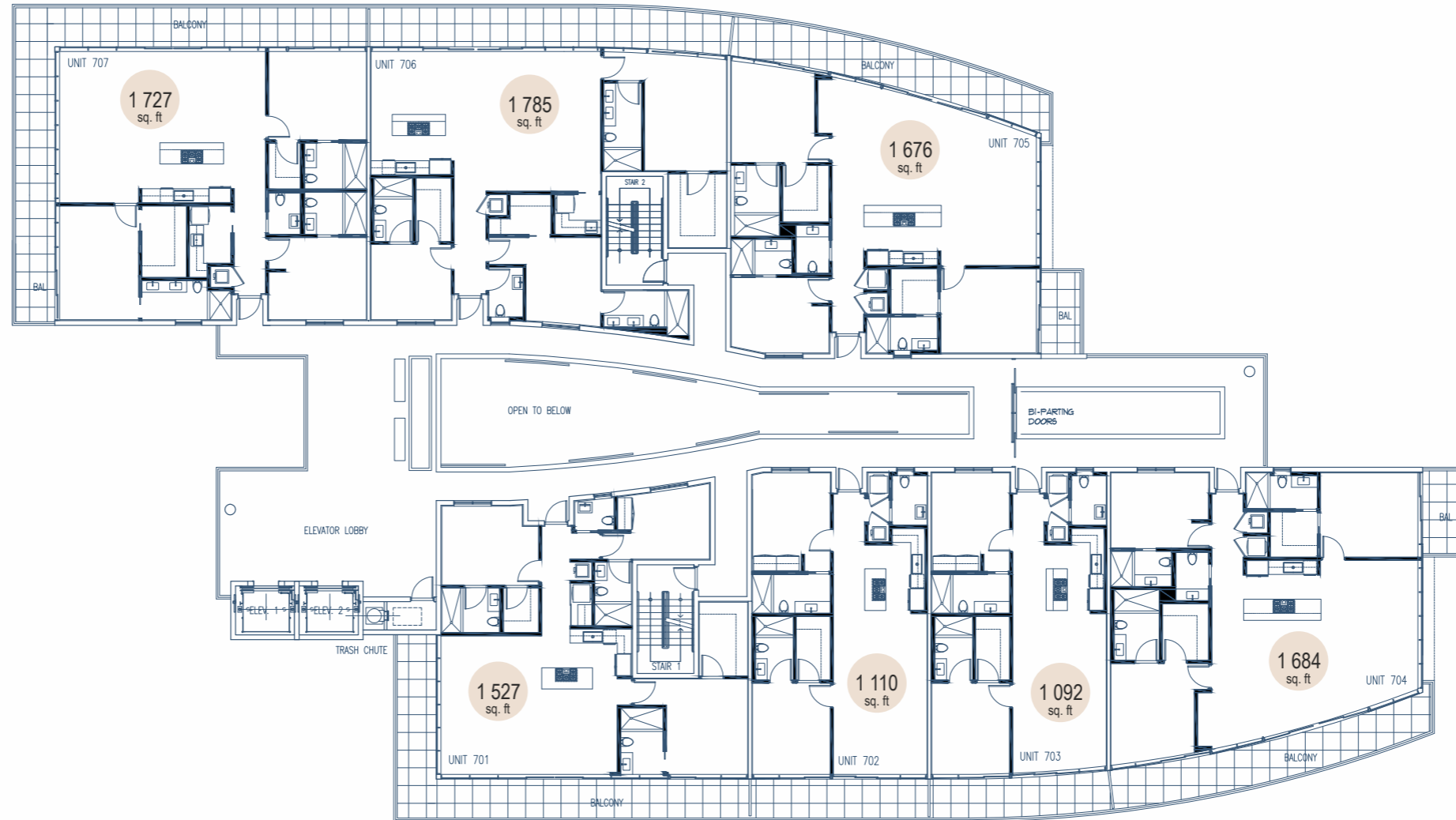
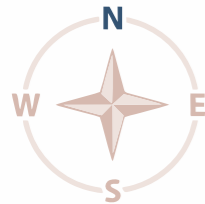
OCEANVIEW



# 7TH floor/floor plans

Intracoastal view

OCEANVIEW





3319 N. OCEAN DRIVE HOLLYWOOD FLORIDA  
**BEACHSIDE**  
RESIDENCES

**UNITplans**

## TOWNHOUSE#1

LOWERlevel

BEDROOMS 3  
BATHS 2.5  
SQUARE FOOTAGE 2543

3RD FLOOR

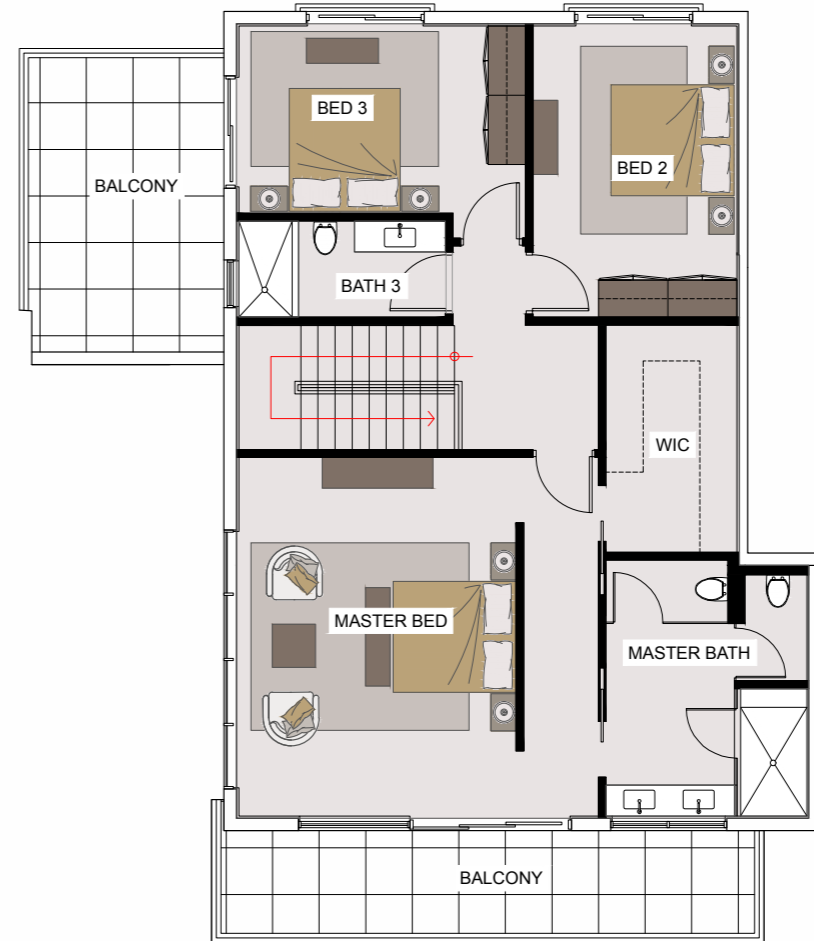


## TOWNHOUSE#1

UPPERlevel

BEDROOMS 3  
BATHS 2.5  
SQUARE FOOTAGE 2543

4th floor

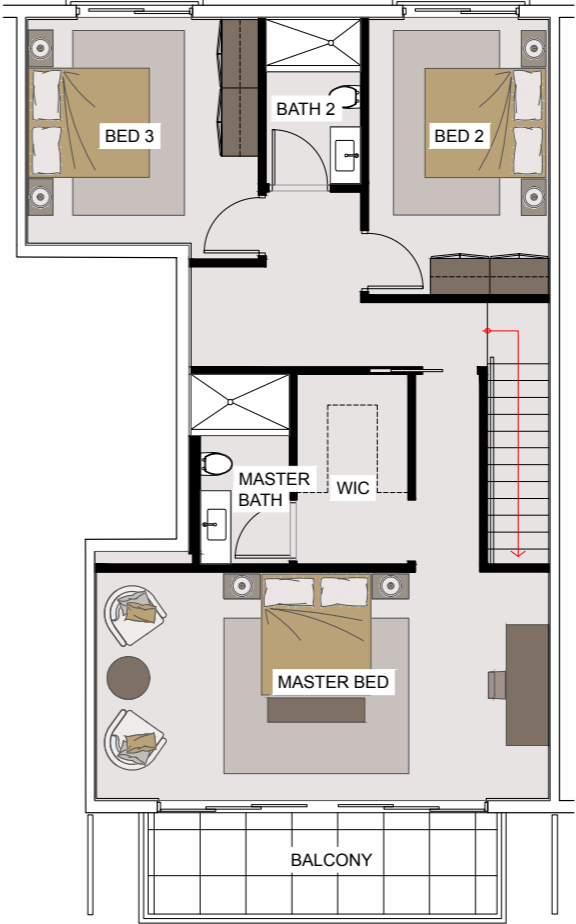
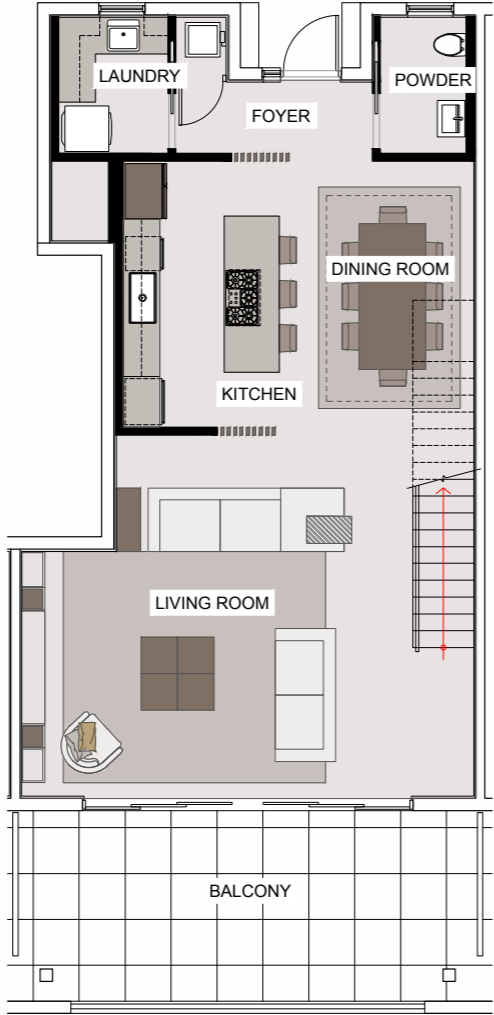


**TOWNHOUSE#2**

LOWERlevel

BEDROOMS 3  
BATHS 2.5  
SQUARE FOOTAGE 2061

3RD FLOOR



**TOWNHOUSE#2**

UPPERlevel

BEDROOMS 3  
BATHS 2.5  
SQUARE FOOTAGE 2061

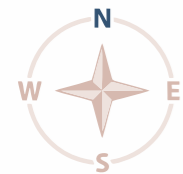
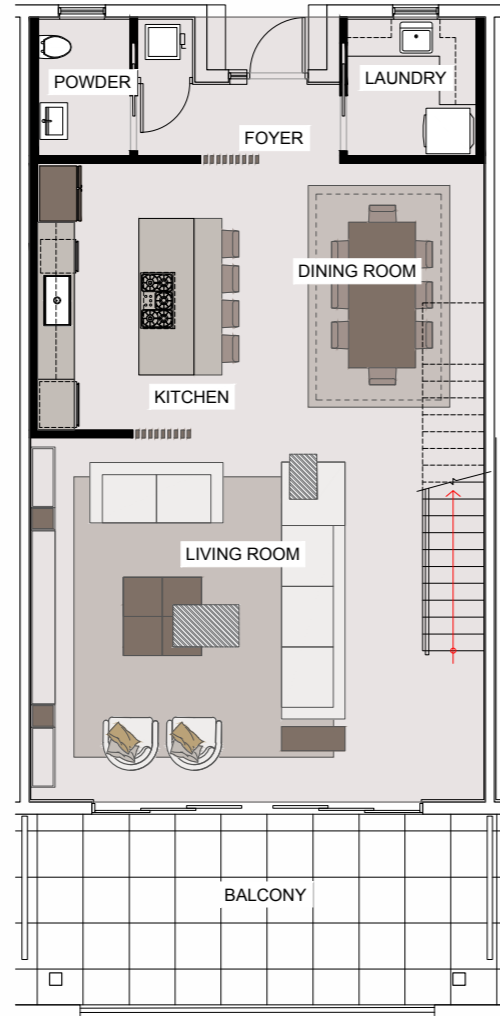
4th floor

## TOWNHOUSE#3

LOWERlevel

BEDROOMS 3  
BATHS 2.5  
SQUARE FOOTAGE 2203

3RD FLOOR

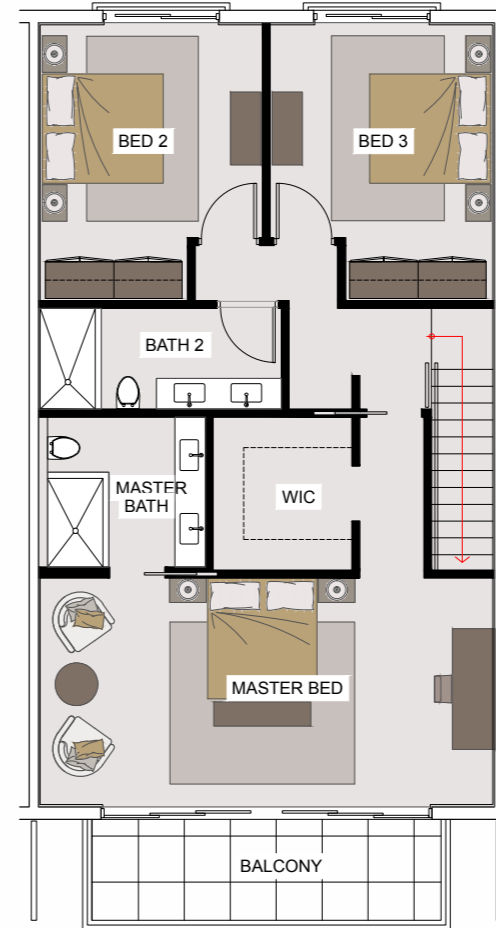


## TOWNHOUSE#3

UPPERlevel

BEDROOMS 3  
BATHS 2.5  
SQUARE FOOTAGE 2203

4th floor

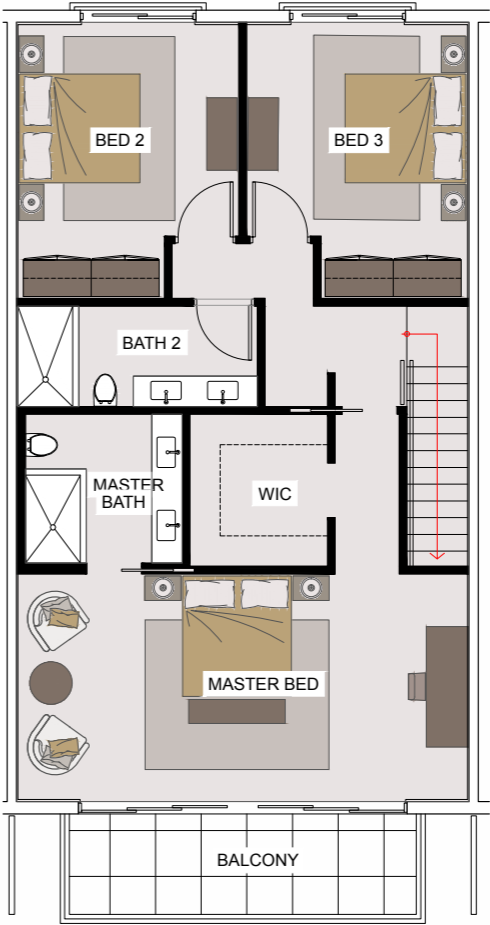
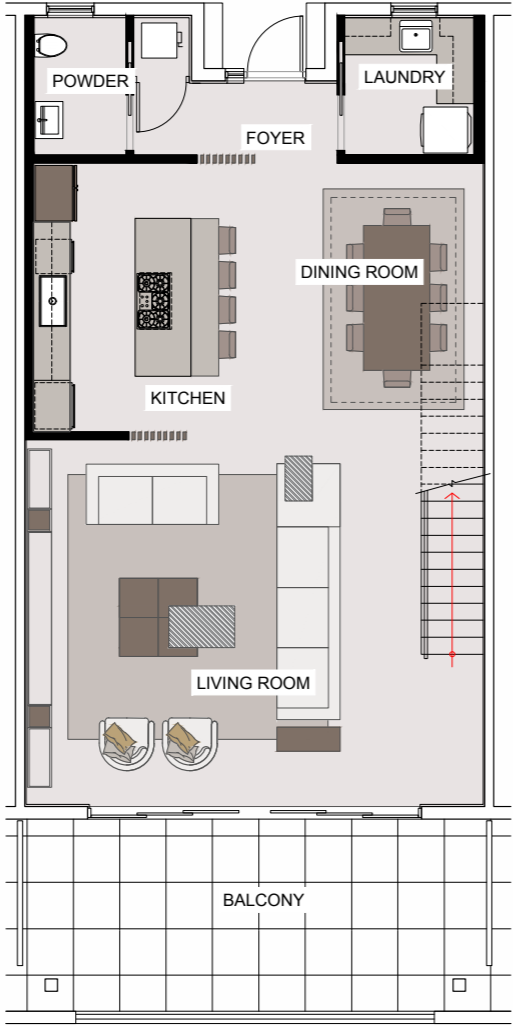


**TOWNHOUSE#4**

LOWERlevel

BEDROOMS 3  
BATHS 2.5  
SQUARE FOOTAGE 2202

3RD FLOOR



**TOWNHOUSE#4**

UPPERlevel

BEDROOMS 3  
BATHS 2.5  
SQUARE FOOTAGE 2202

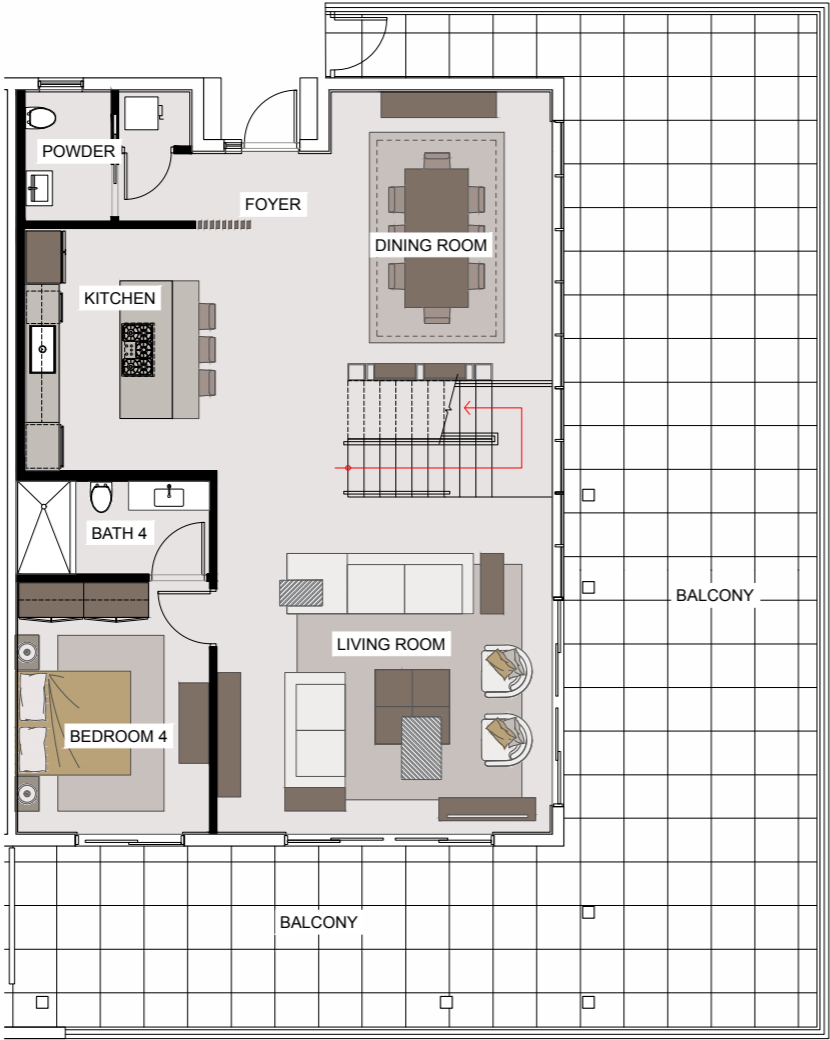
4th floor

**TOWNHOUSE#5**

LOWERlevel

BEDROOMS **4**  
BATHS **4.5**  
SQUARE FOOTAGE **2759**

3RD FLOOR

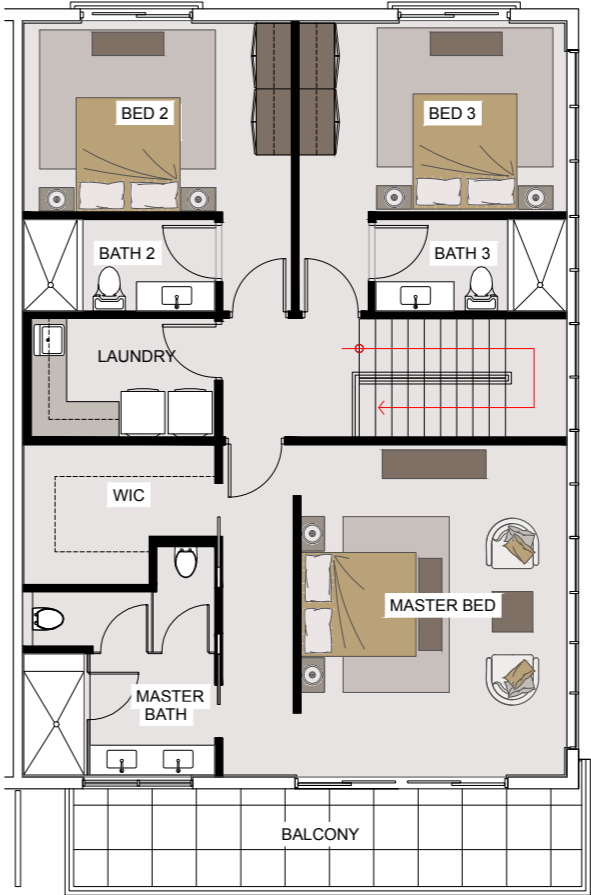


**TOWNHOUSE#5**

UPPERlevel

BEDROOMS **4**  
BATHS **4.5**  
SQUARE FOOTAGE **2759**

4th floor

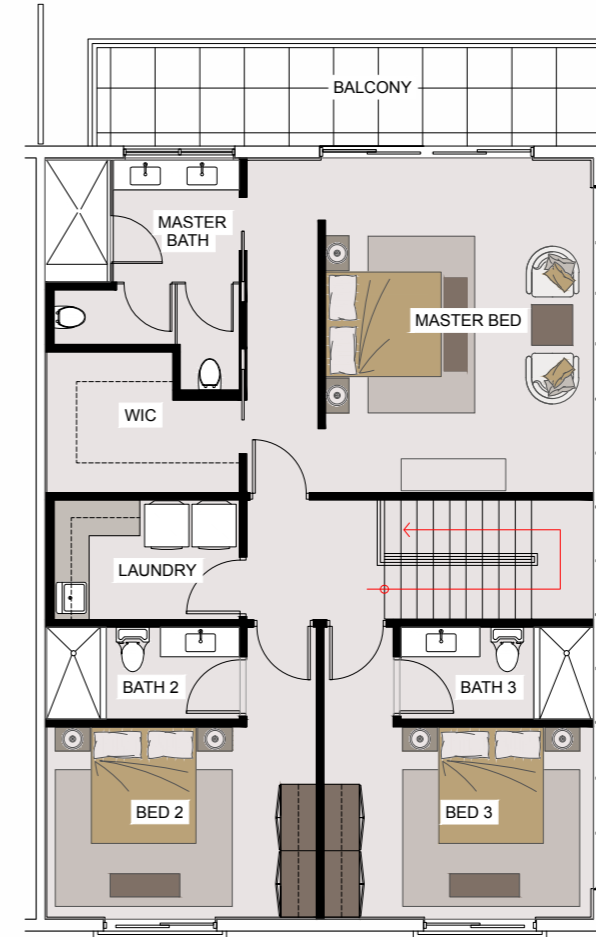
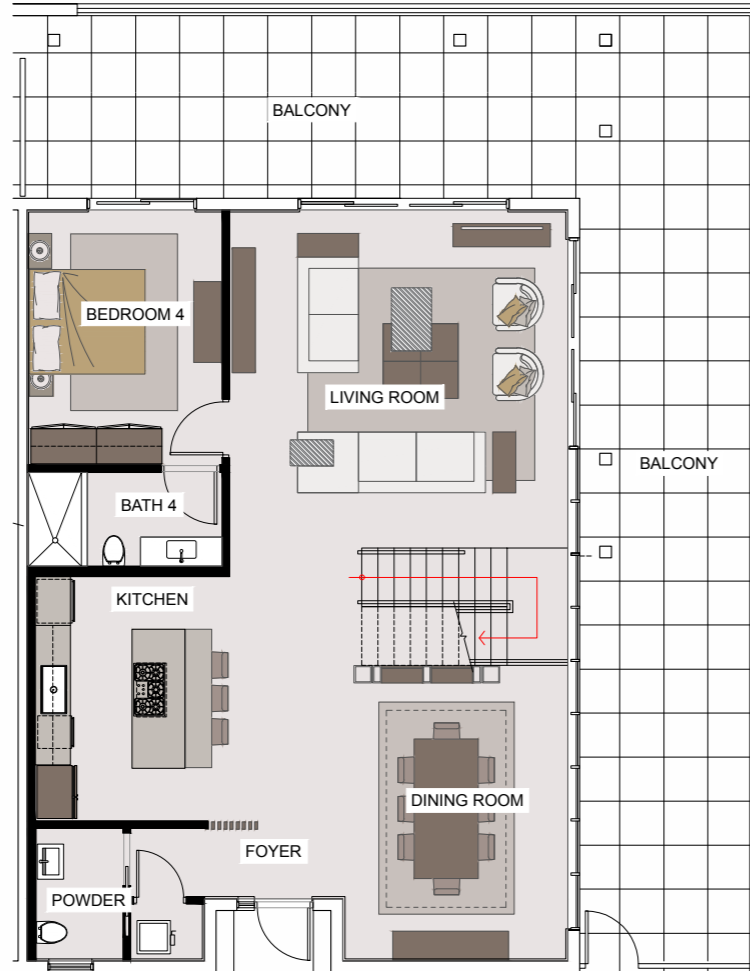


## TOWNHOUSE#6

LOWERlevel

BEDROOMS **4**  
BATHS **4.5**  
SQUARE FOOTAGE **2759**

3RD FLOOR



## TOWNHOUSE#6

UPPERlevel

BEDROOMS **4**  
BATHS **4.5**  
SQUARE FOOTAGE **2759**

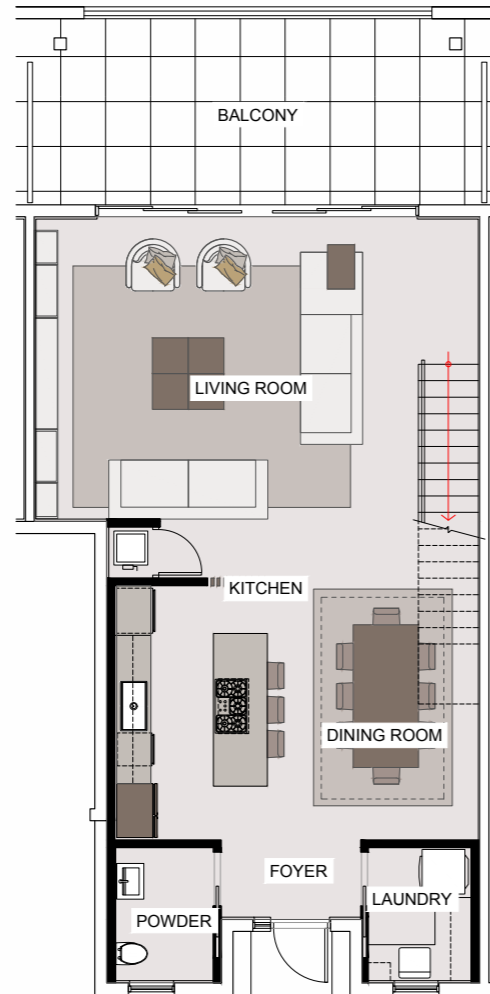
4th floor

## TOWNHOUSE#7

LOWERlevel

BEDROOMS **3**  
BATHS **2.5**  
SQUARE FOOTAGE **1996**

3RD FLOOR

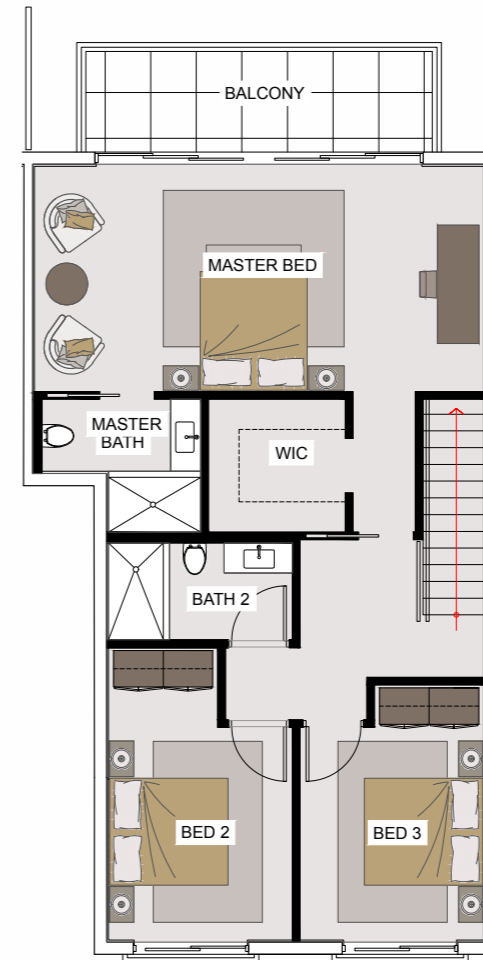


## TOWNHOUSE#7

UPPERlevel

BEDROOMS **3**  
BATHS **2.5**  
SQUARE FOOTAGE **1996**

4th floor

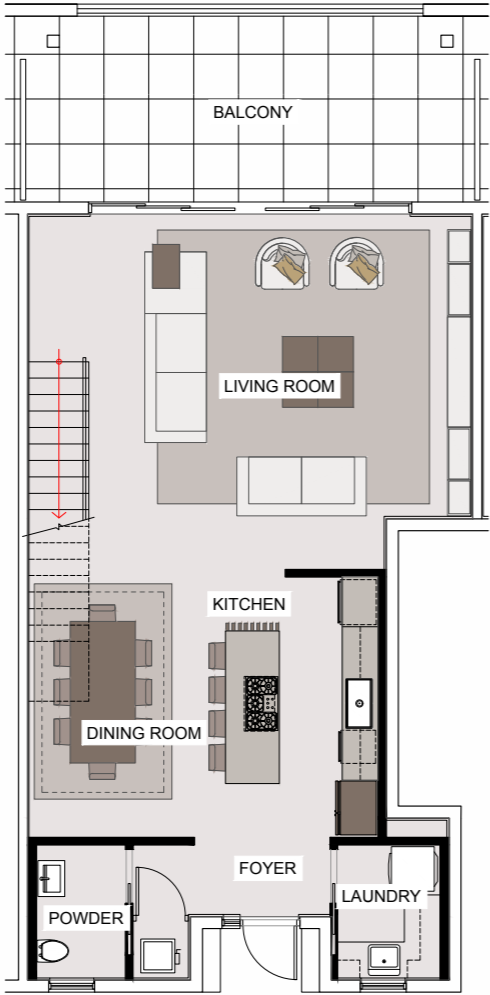


**TOWNHOUSE#8**

LOWERlevel

BEDROOMS **3**  
BATHS **2.5**  
SQUARE FOOTAGE **2068**

3RD FLOOR

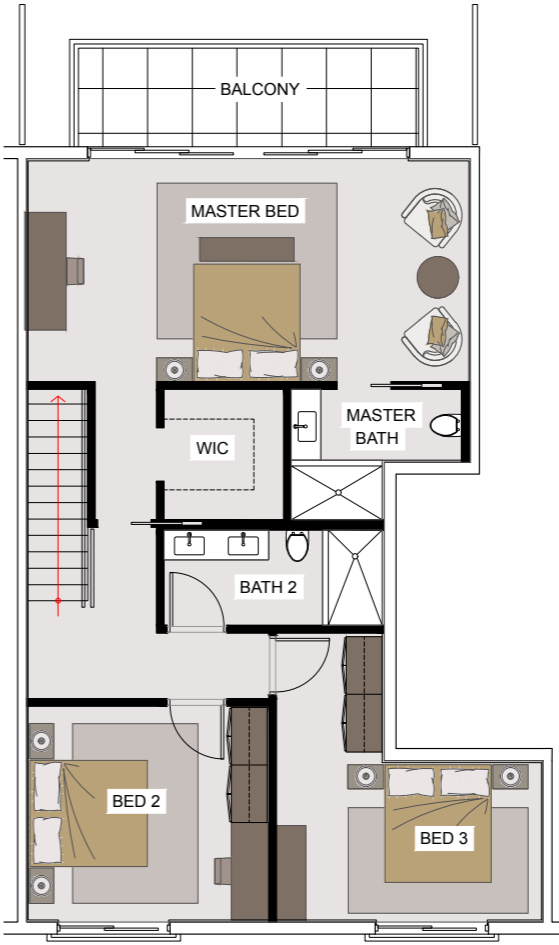


**TOWNHOUSE#8**

UPPERlevel

BEDROOMS **3**  
BATHS **2.5**  
SQUARE FOOTAGE **2068**

4th floor

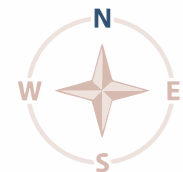
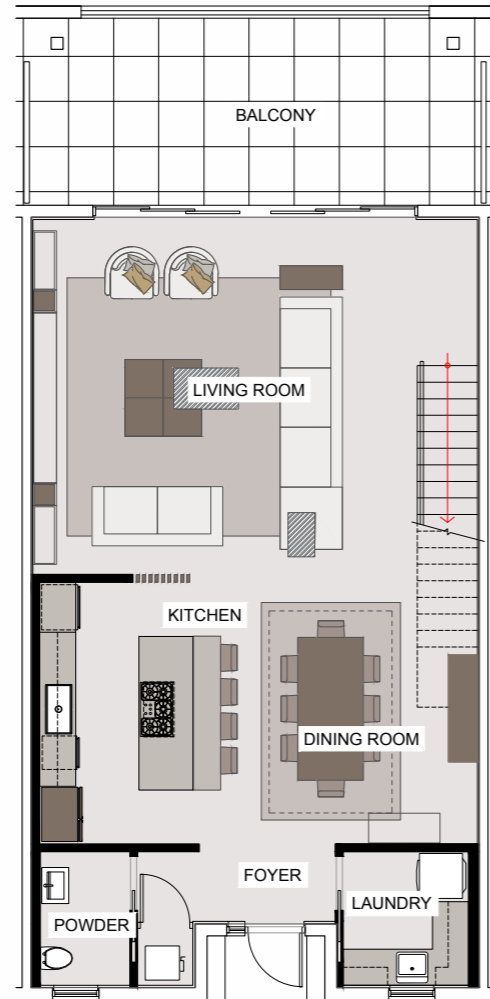


## TOWNHOUSE#9

LOWERlevel

BEDROOMS **3**  
BATHS **2.5**  
SQUARE FOOTAGE **2202**

3RD FLOOR

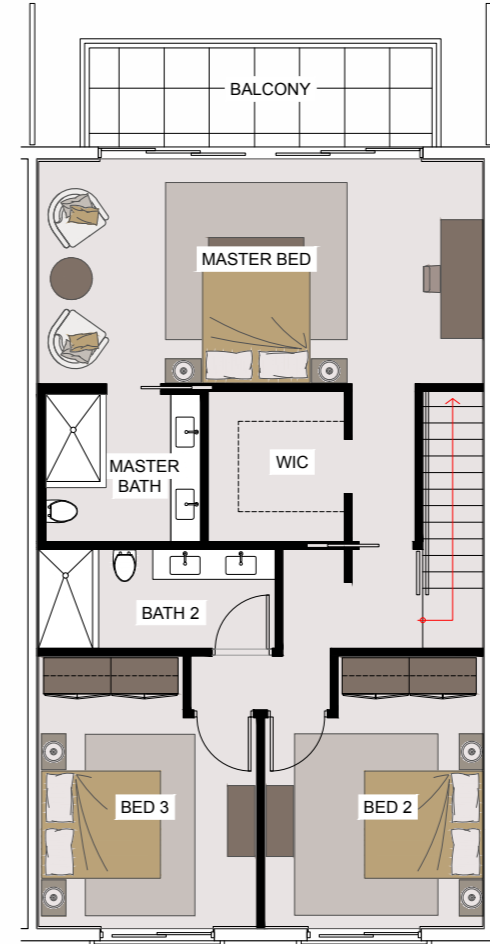


## TOWNHOUSE#9

UPPERlevel

BEDROOMS **3**  
BATHS **2.5**  
SQUARE FOOTAGE **2202**

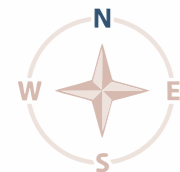
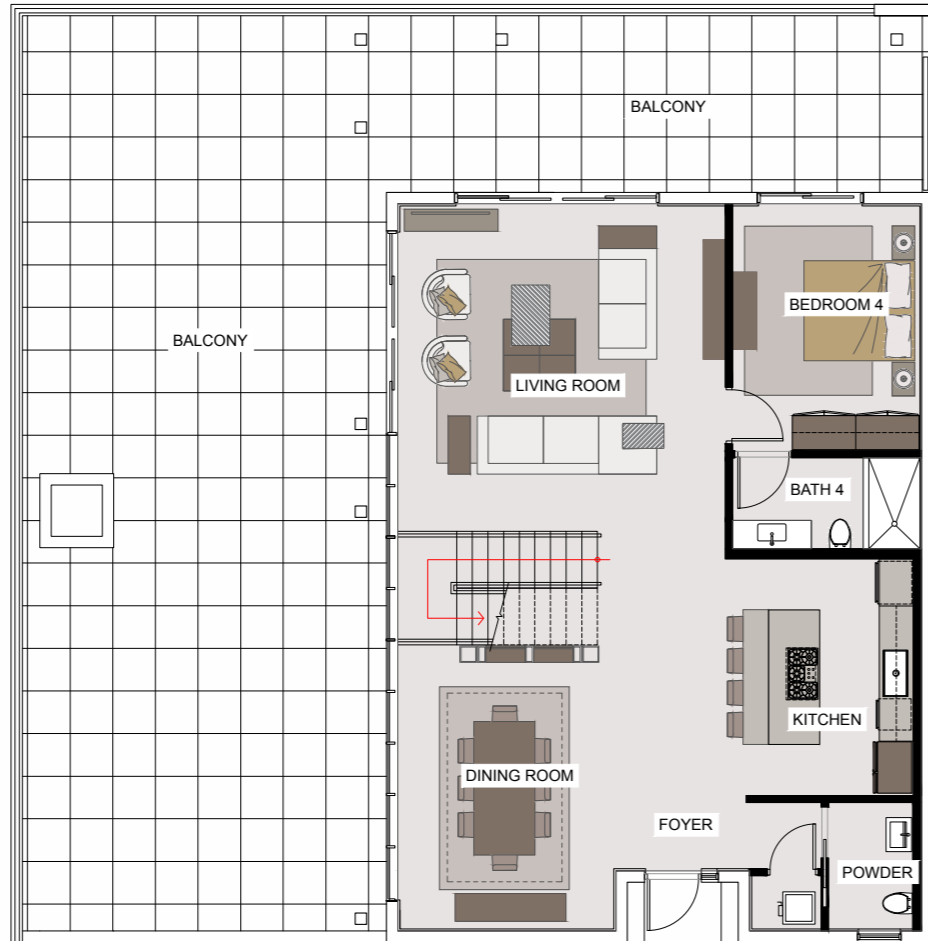
4th floor



**TOWNHOUSE#10**  
LOWERlevel

BEDROOMS **4**  
BATHS **4.5**  
SQUARE FOOTAGE **2759**

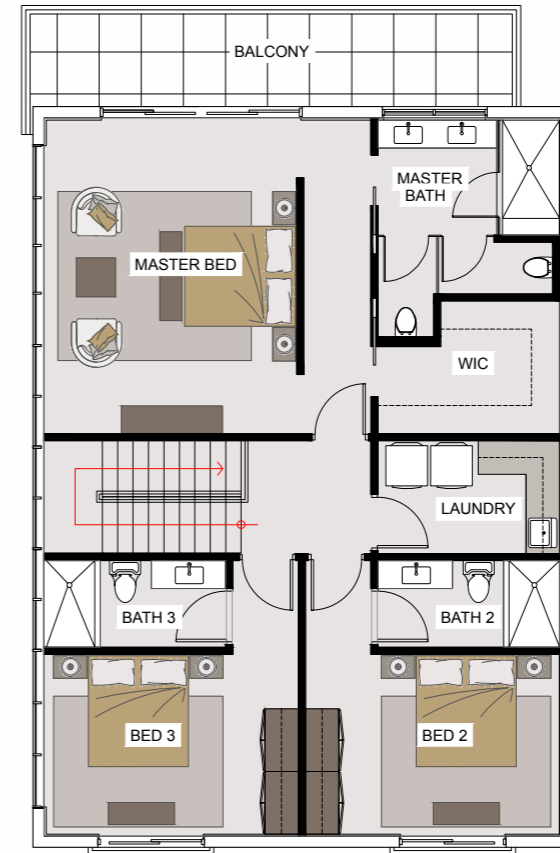
3RD FLOOR



**TOWNHOUSE#10**  
UPPERlevel

BEDROOMS **4**  
BATHS **4.5**  
SQUARE FOOTAGE **2759**

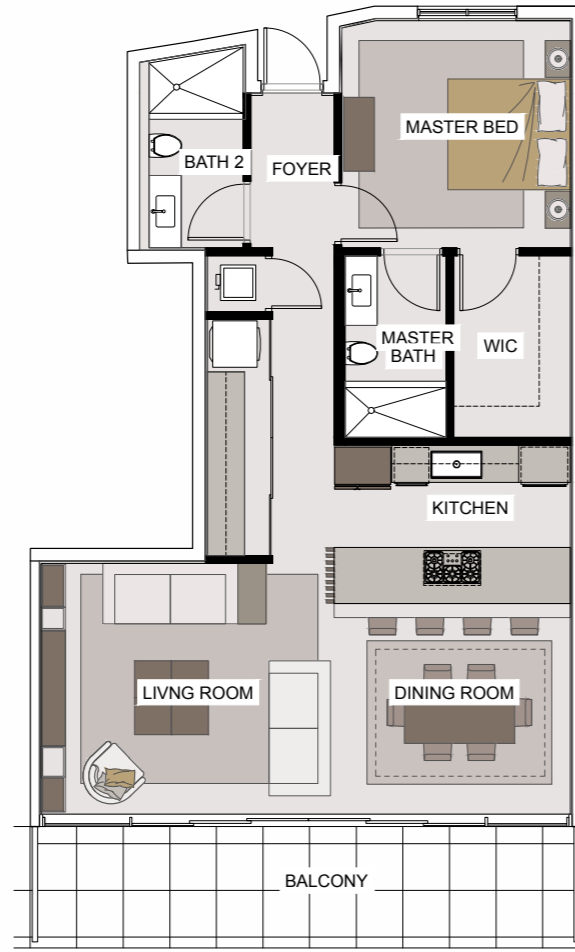
4th floor



## UNIT #501

BEDROOMS **1**  
BATHS **1.5**  
SQUARE FOOTAGE **1033**

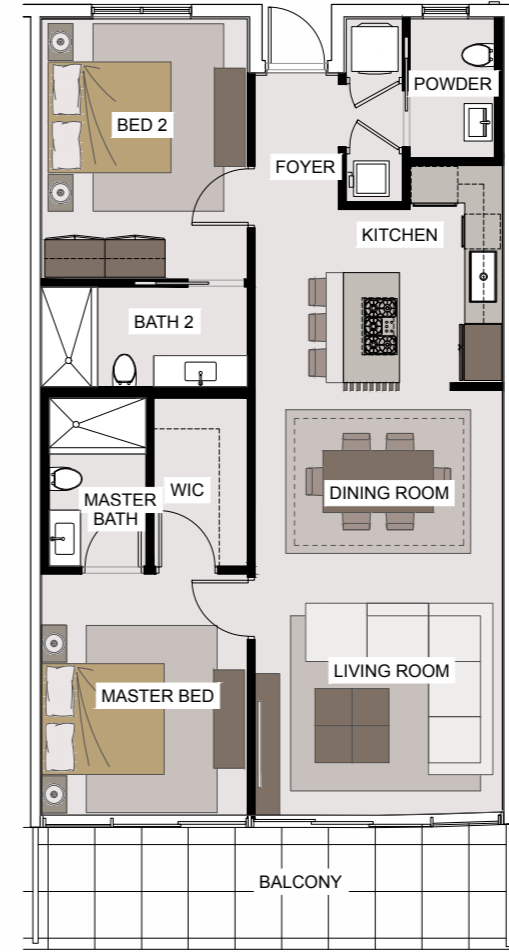
5TH FLOOR



## UNIT #502

BEDROOMS **2**  
BATHS **2.5**  
SQUARE FOOTAGE **1102**

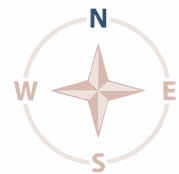
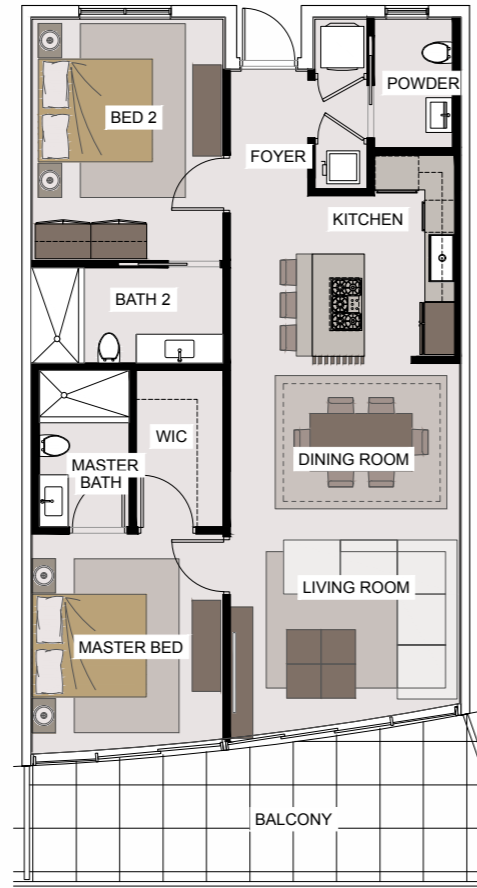
5th floor



## UNIT #503

BEDROOMS **2**  
BATHS **2.5**  
SQUARE FOOTAGE **1067**

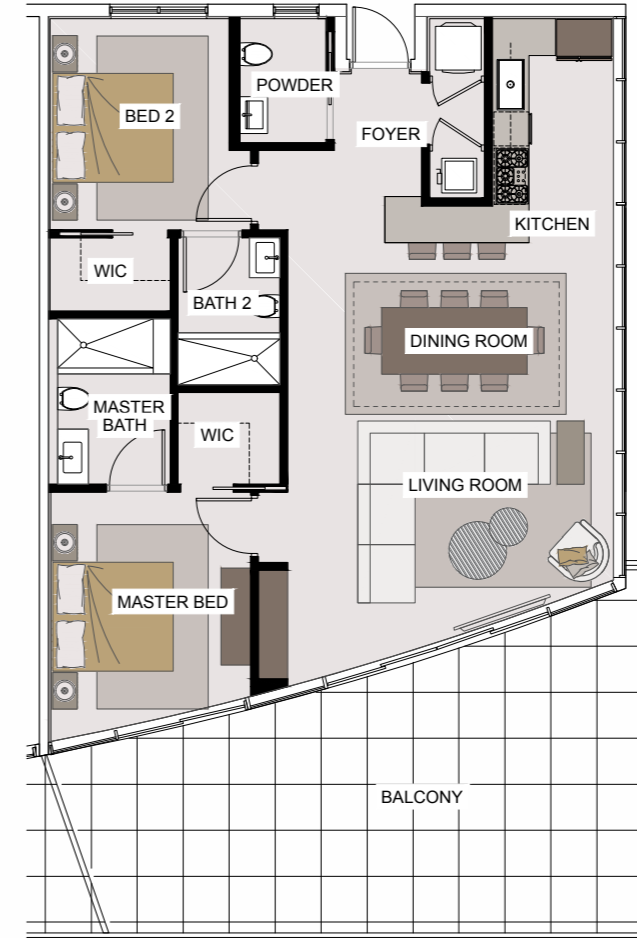
5TH FLOOR



## UNIT #504

BEDROOMS **2**  
BATHS **2.5**  
SQUARE FOOTAGE **1154**

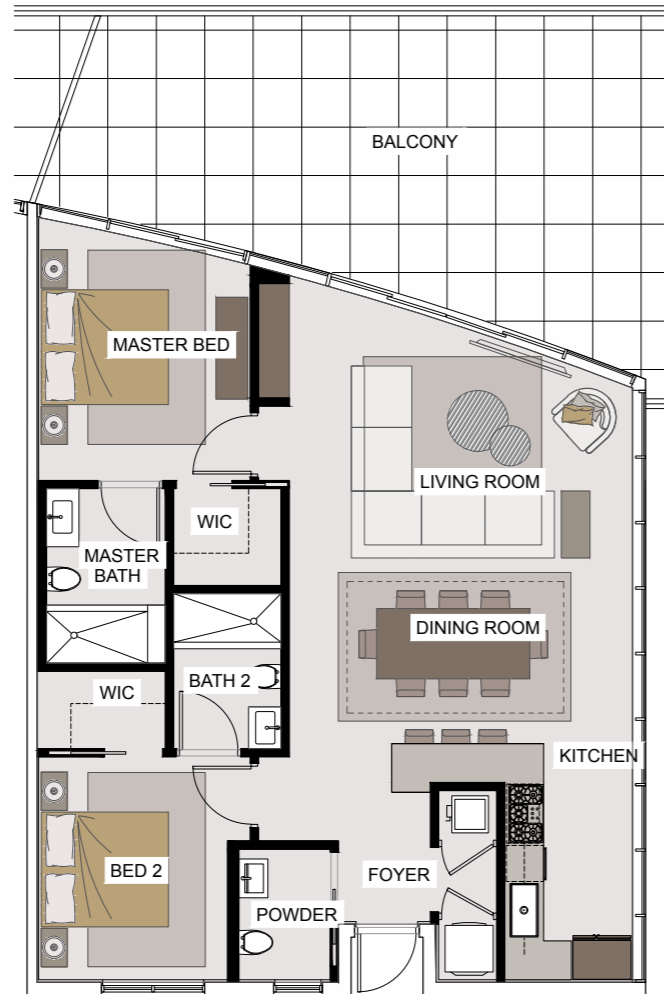
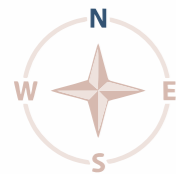
5th floor



## UNIT #505

BEDROOMS **2**  
BATHS **2.5**  
SQUARE FOOTAGE **1154**

5TH FLOOR



## UNIT #506

BEDROOMS **1**  
BATHS **1.5**  
SQUARE FOOTAGE **965**

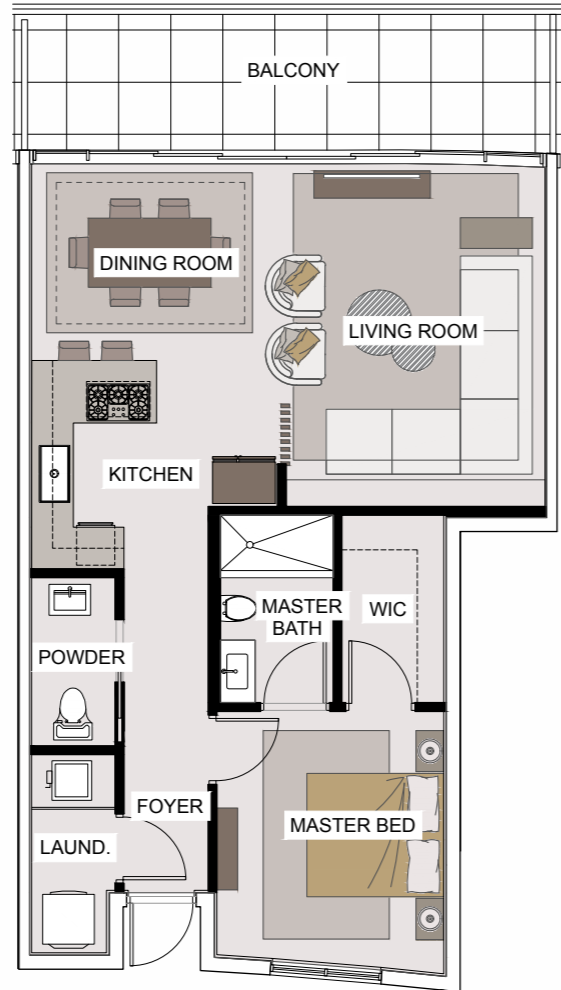
5th floor



## UNIT #507

BEDROOMS **1**  
BATHS **1.5**  
SQUARE FOOTAGE **883**

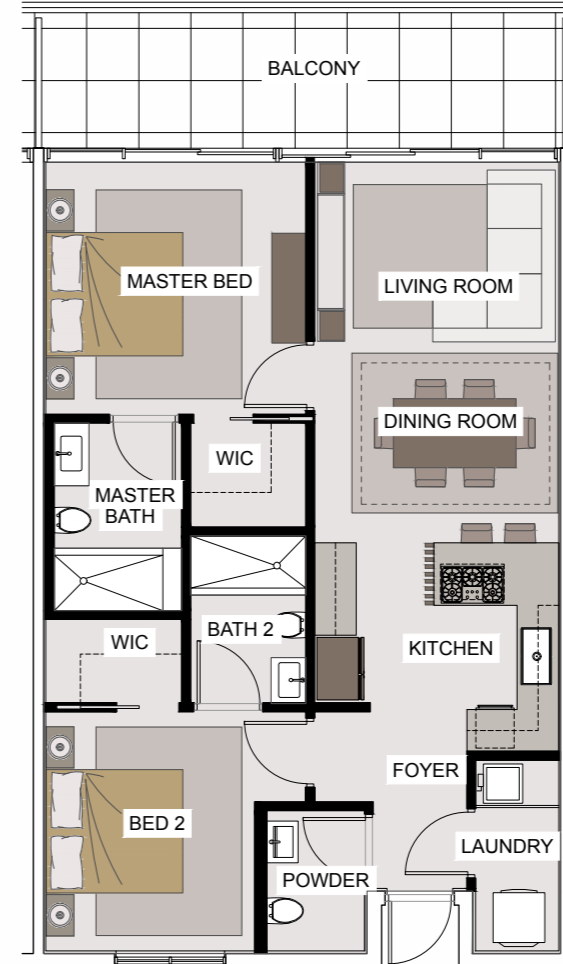
5TH FLOOR



## UNIT #508

BEDROOMS **1**  
BATHS **1.5**  
SQUARE FOOTAGE **983**

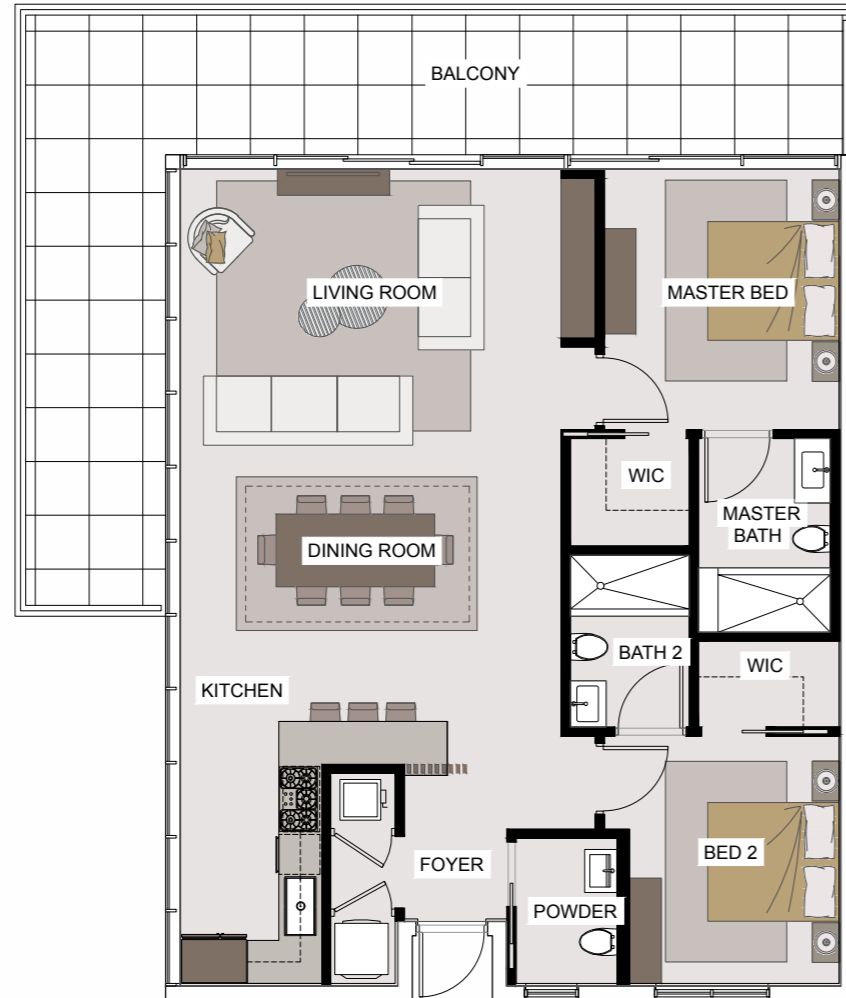
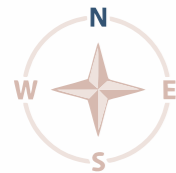
5th floor



## UNIT #509

BEDROOMS 2  
BATHS 2.5  
SQUARE FOOTAGE 1232

5TH FLOOR



## UNIT #601

BEDROOMS 2  
BATHS 2.5  
SQUARE FOOTAGE 1094

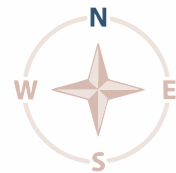
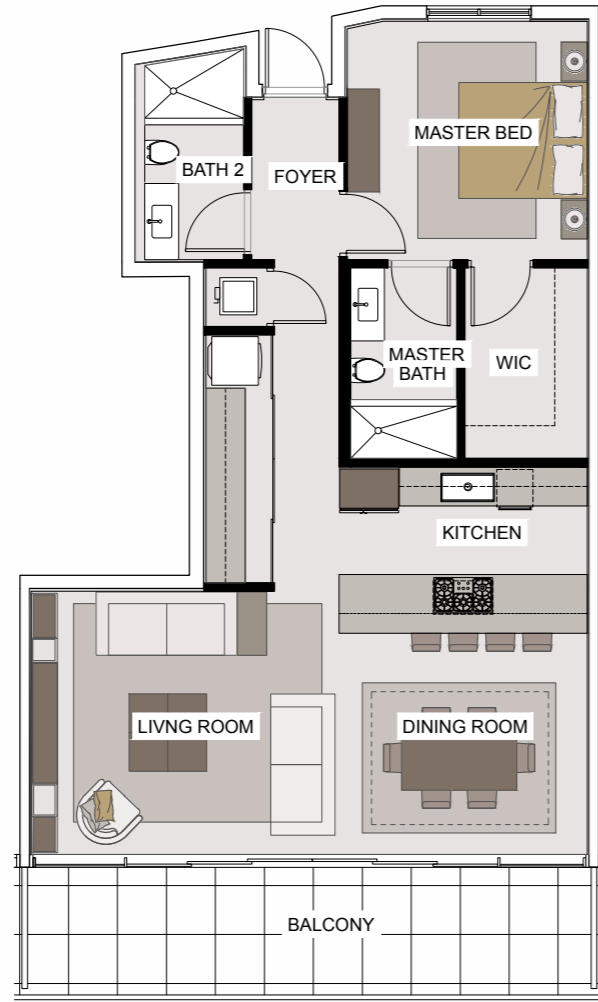
6th floor



## UNIT #602

BEDROOMS **1**  
BATHS **1.5**  
SQUARE FOOTAGE **1033**

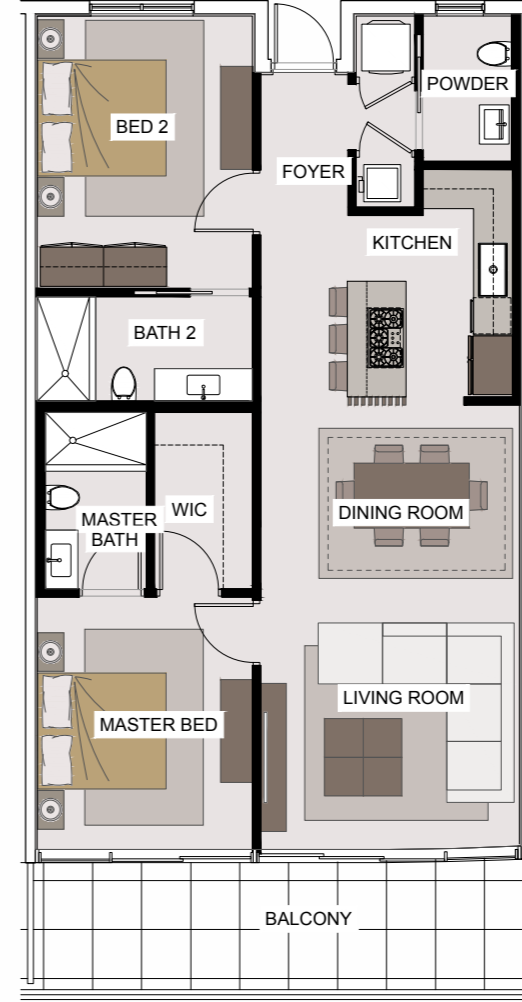
6TH FLOOR



## UNIT #603

BEDROOMS **2**  
BATHS **2.5**  
SQUARE FOOTAGE **1102**

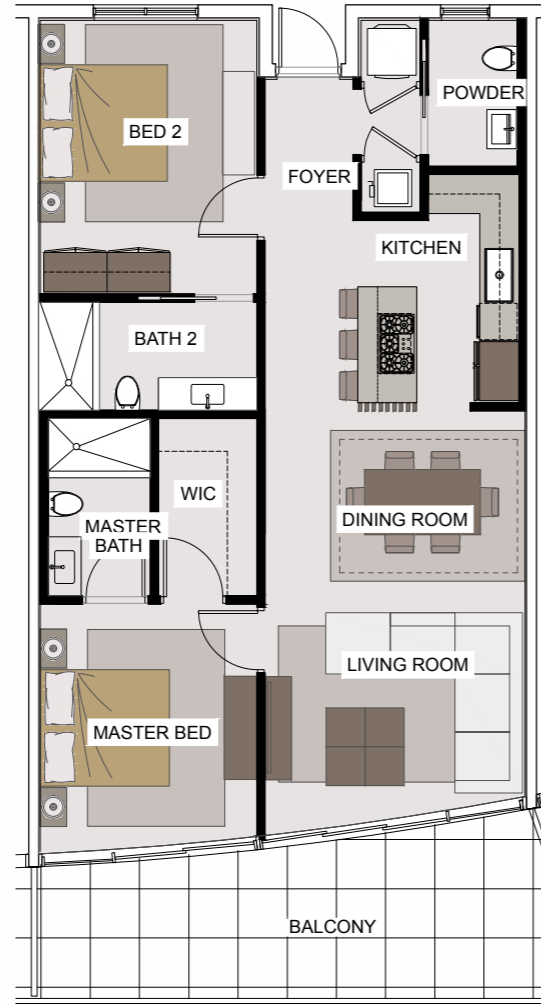
6th floor



## UNIT #604

BEDROOMS **2**  
BATHS **2.5**  
SQUARE FOOTAGE **1067**

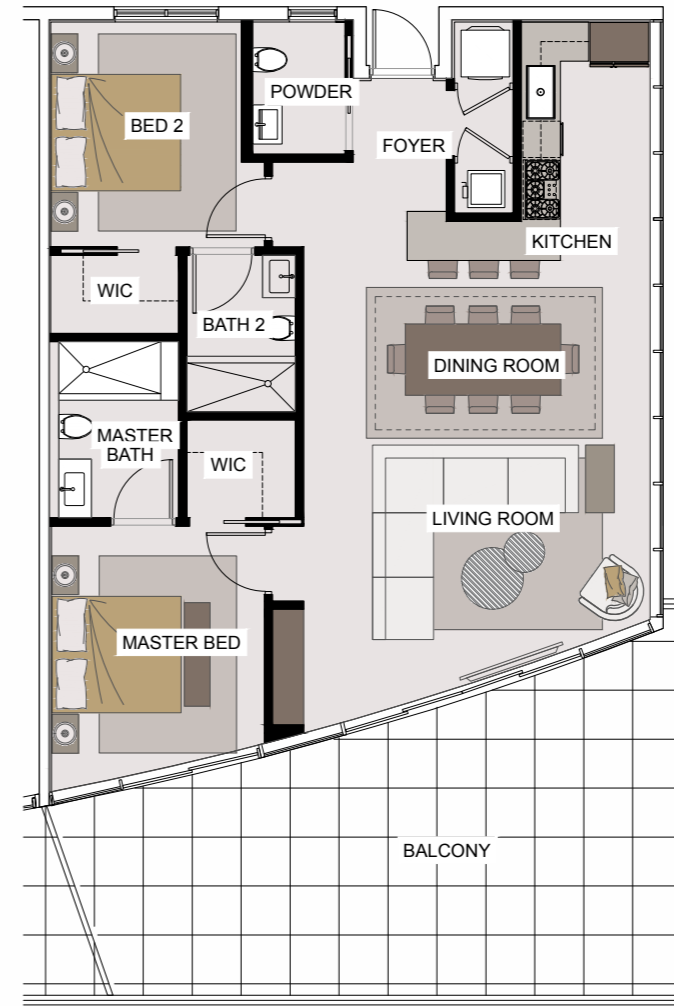
6TH FLOOR



## UNIT #605

BEDROOMS **2**  
BATHS **2.5**  
SQUARE FOOTAGE **1154**

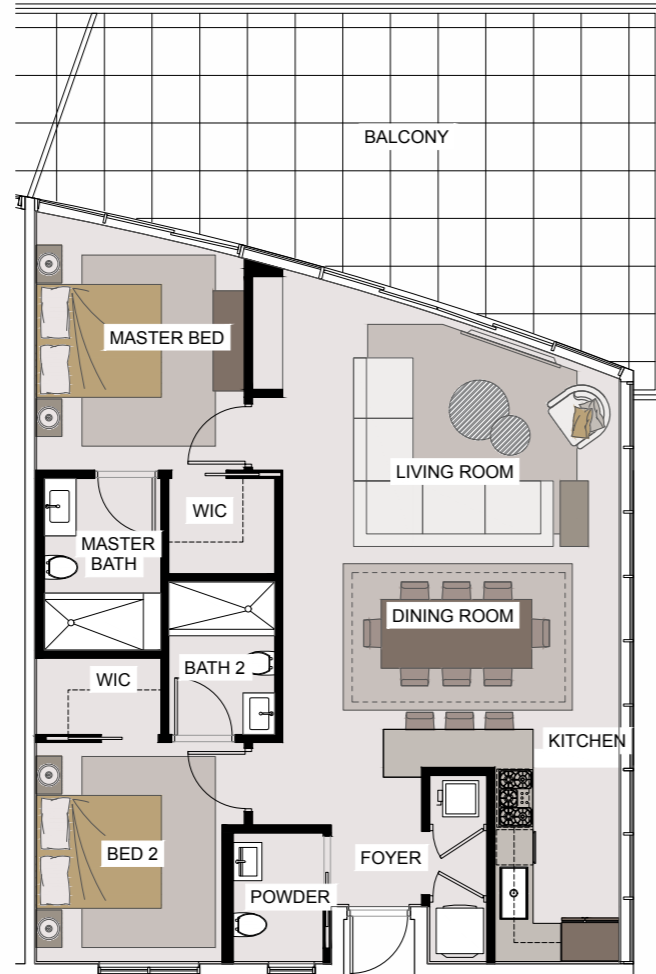
6th floor



## UNIT#606

BEDROOMS **2**  
BATHS **2.5**  
SQUARE FOOTAGE **1154**

6TH FLOOR



## UNIT#607

BEDROOMS **1**  
BATHS **1.5**  
SQUARE FOOTAGE **965**

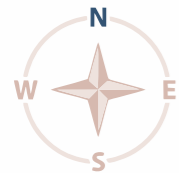
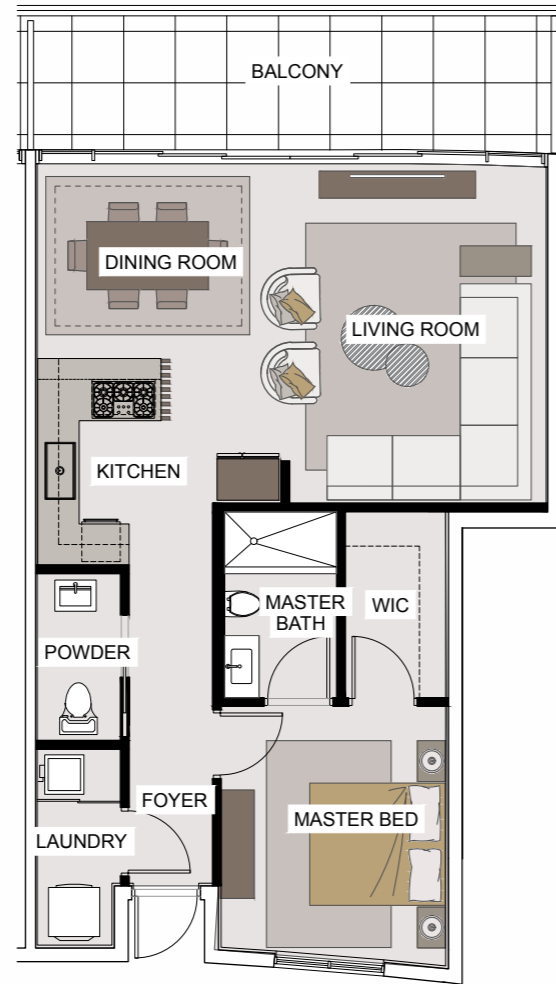
6th floor



## UNIT #608

BEDROOMS **1**  
BATHS **1.5**  
SQUARE FOOTAGE **883**

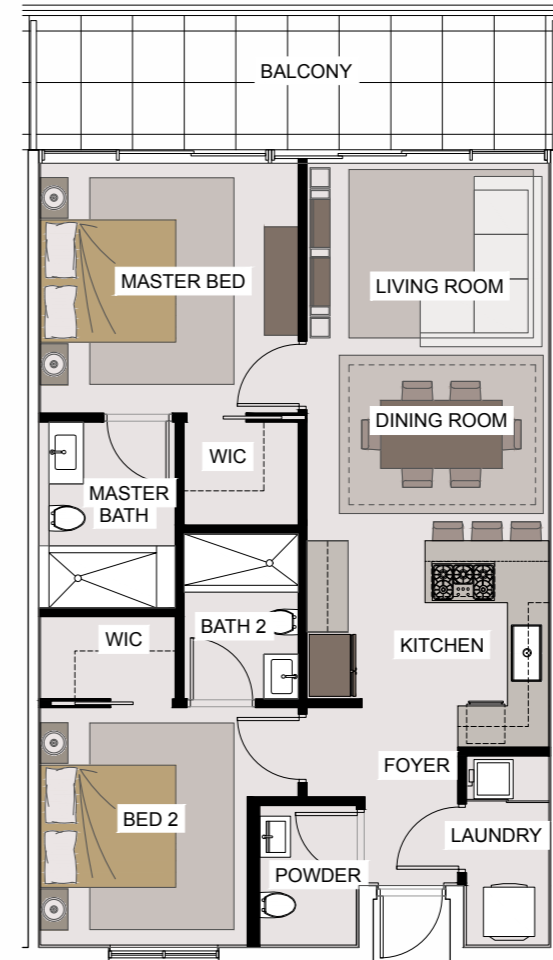
6TH FLOOR



## UNIT #609

BEDROOMS **2**  
BATHS **2.5**  
SQUARE FOOTAGE **983**

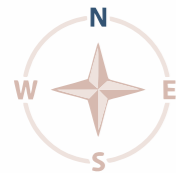
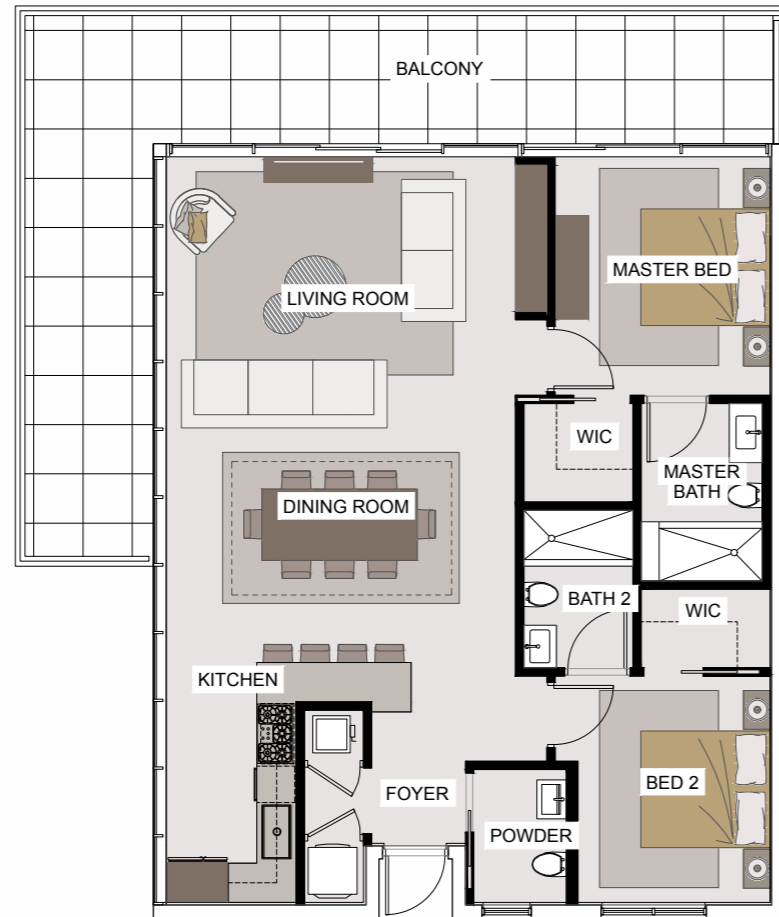
6th floor



## UNIT#610

BEDROOMS **2**  
BATHS **2.5**  
SQUARE FOOTAGE **1232**

6TH FLOOR



## UNIT#701

BEDROOMS **3**  
BATHS **3.5**  
SQUARE FOOTAGE **1527**

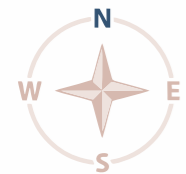
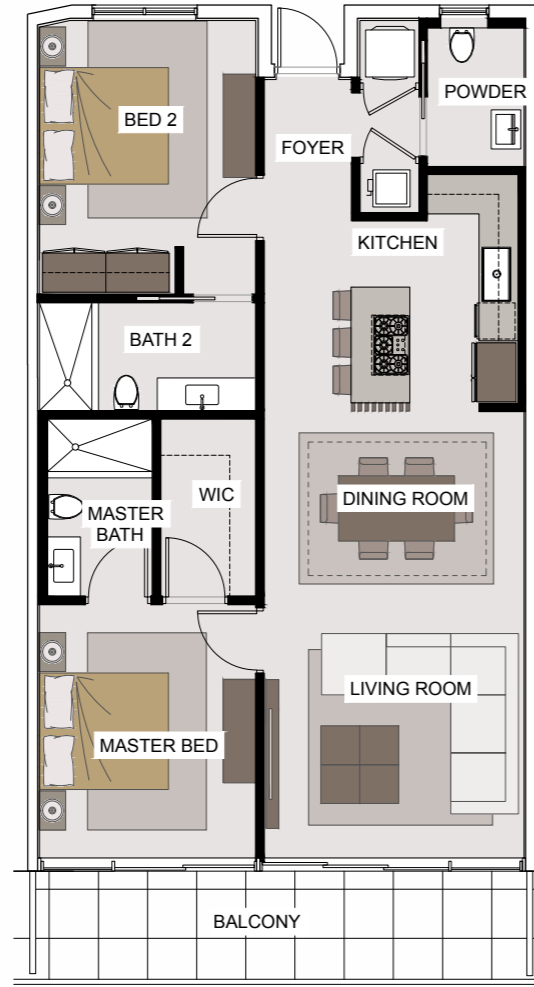
7th floor



## UNIT#702

BEDROOMS **2**  
BATHS **2.5**  
SQUARE FOOTAGE **1100**

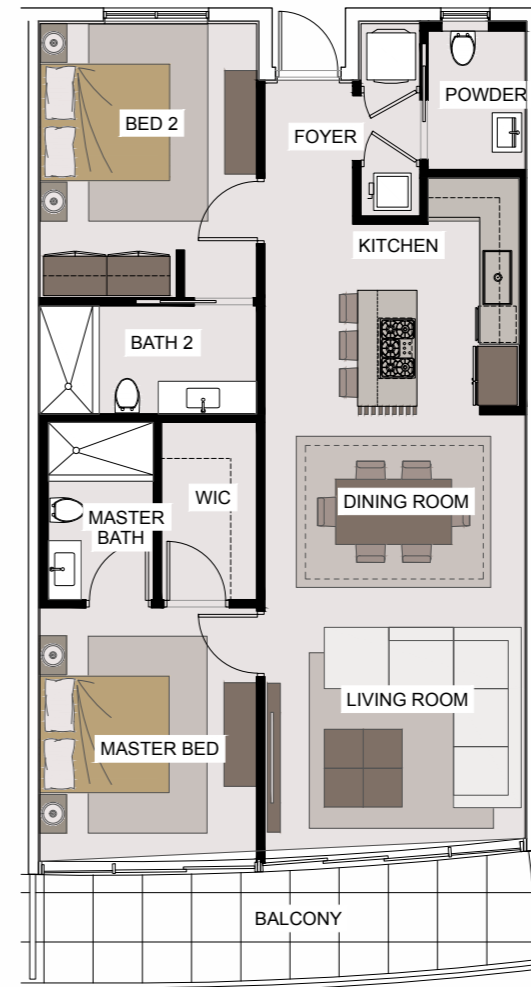
7TH FLOOR



## UNIT#703

BEDROOMS **2**  
BATHS **2.5**  
SQUARE FOOTAGE **1092**

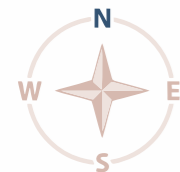
7th floor



## UNIT#704

BEDROOMS **3**  
BATHS **3.5**  
SQUARE FOOTAGE **1684**

7TH FLOOR



## UNIT#705

BEDROOMS **3**  
BATHS **3.5**  
SQUARE FOOTAGE **1676**

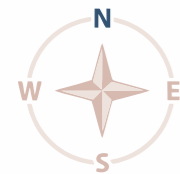
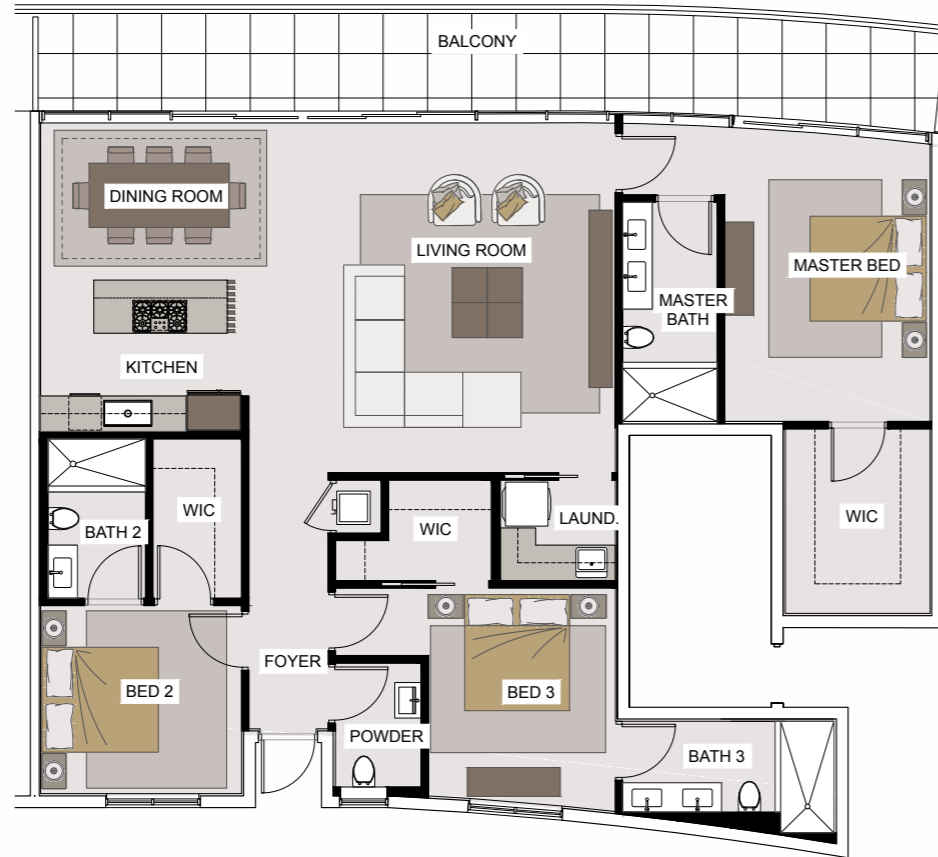
7th floor



## UNIT#706

BEDROOMS **3**  
BATHS **3.5**  
SQUARE FOOTAGE **1785**

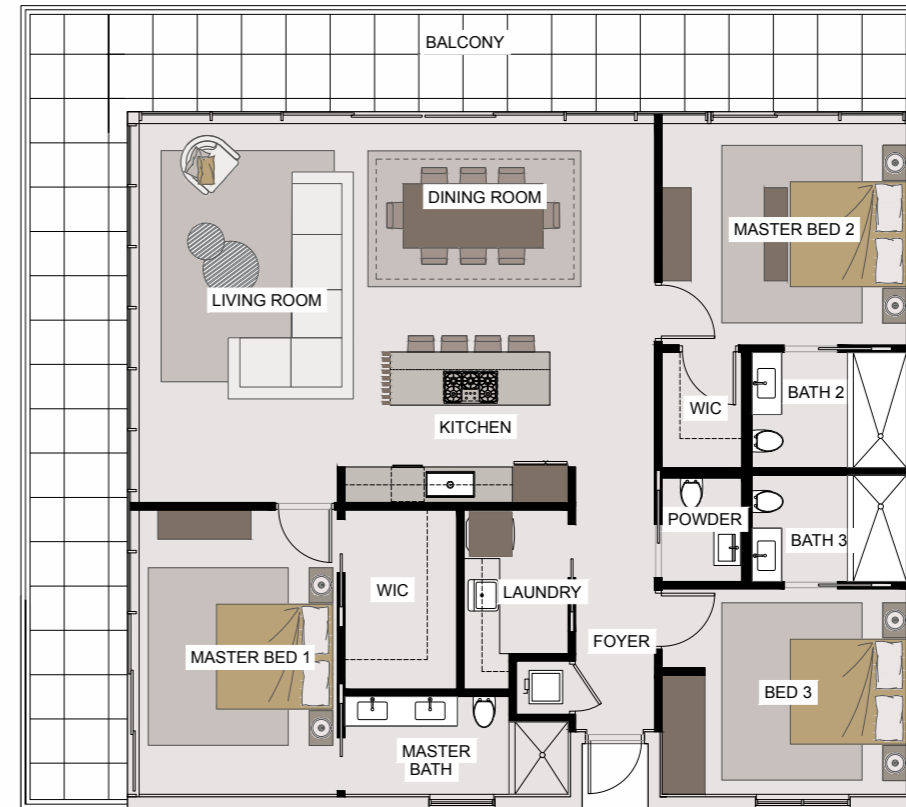
7TH FLOOR



## UNIT#707

BEDROOMS **3**  
BATHS **3.5**  
SQUARE FOOTAGE **1727**

7th floor





3319 N. OCEAN DRIVE HOLLYWOOD FLORIDA

# BEACHSIDE

RESIDENCES

FOR UNIT PRICING, PLEASE CALL:  
ROGER LOHSE / remax 5 star realty  
**786-200-7281**